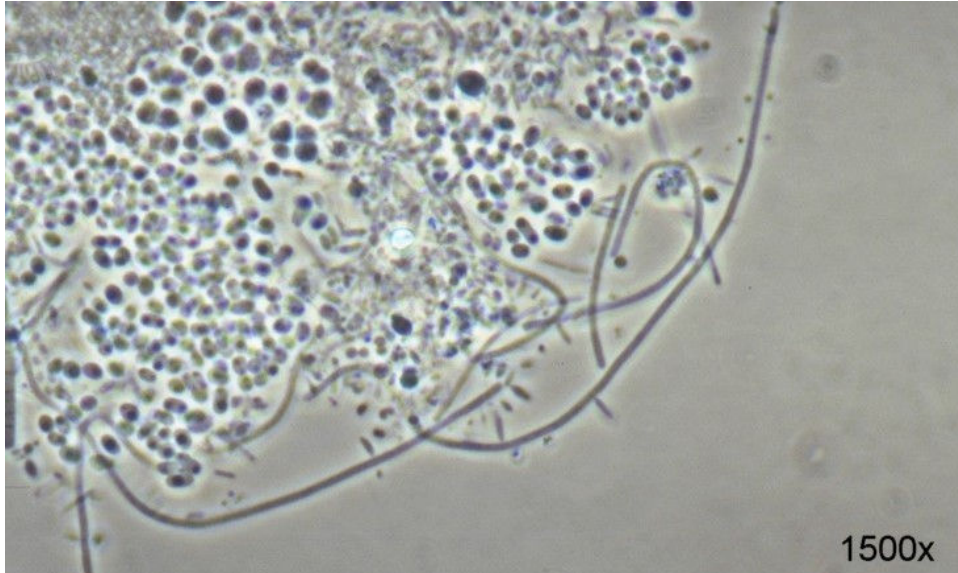


Type 0581

Resembles: "*Candidatus M. parvicella*" (Gram positive and probes available) and Type IF-59 (very tiny filaments)

Probes: not available

Frequency occurrence (200 samples; 175 WTPs): observed in one sample only (FI = 2)



Characteristics:

- curled/coiled filaments, sometimes tangled;
- not motile;
- filament length usually < 200 μm ;
- cell diameter ca. 0.5 μm ;
- no sheath;
- some attached growth might be present;
- septa not visible;
- no sulphur storage;
- Gram negative;
- Neisser negative;

Physiology

Nothing is known about the physiology of this filamentous morphotype.

Occurrence in activated sludge

Type 0581 mainly occurs in domestic plants.

Control options

Not relevant

Slide show images

- 1-3: morphology at a high magnification